



| General Parameter   |  |
|---------------------|--|
| Working Voltage     | 12V/24V DC                               |
| Cutttable           | 3LEDs/section(12V)    6LEDs/section(24V) |
| LED Beam Angle      | 120                                      |
| CRI                 | 80+                                      |
| FPC Substrate Color | Brown, White                             |
| FPC Width           | 10mm/12mm                                |
| FPC Thickness       | 2OZ/4OZ                                  |
| Working Temperature | 0°C-40°C                                 |
| Storage Temperature | -20°C-70°C                               |
| IP Rating           | IP20, IP54, IP65, IP67                   |
| Lifespan            | 50,000h                                  |
| Standard Package    | 5m/roll                                  |
| Dimmable            | Yes                                      |
| Certificates        | CE, RoHS, ETL                            |

## Applications

- Architectural lights for canopy, corridor, window, archway
- Backlight or edge lighting for signage
- Decorative lights for holiday, event, show, exhibition
- Cove lighting
- DIY lights for home use
- Path and contour marking

## Electro-optical Characteristics

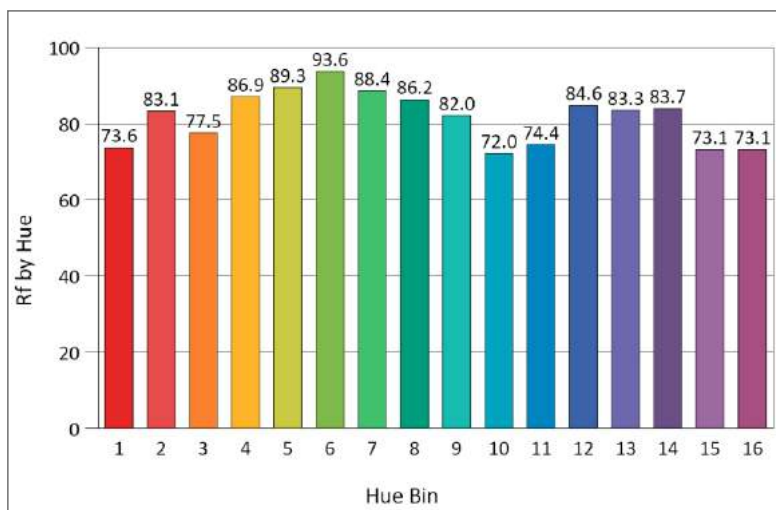
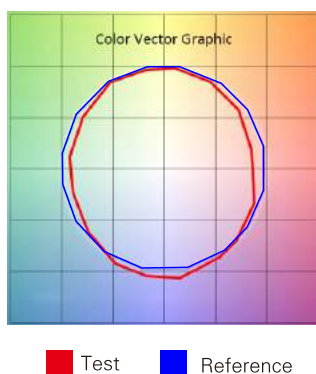


RGB

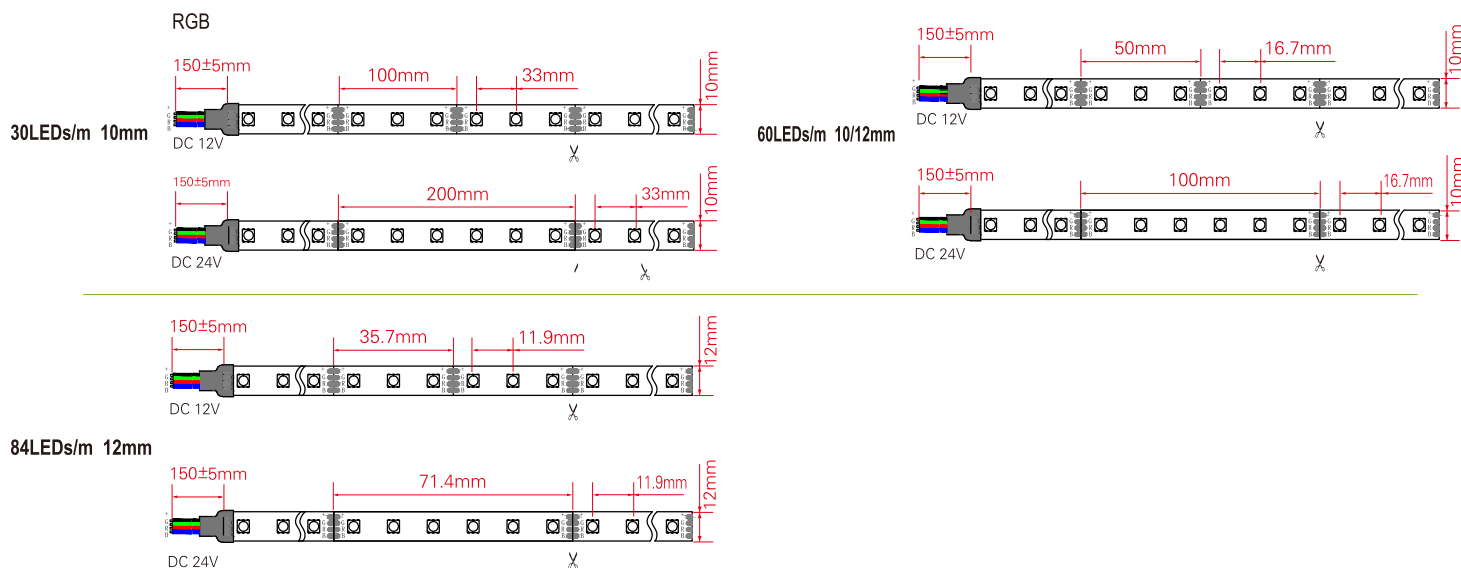
| LEDs/m           | 30LEDs        | 60LEDs          | 84LEDs         |
|------------------|---------------|-----------------|----------------|
| Wattage          | 7.2W/m        | 14.4W/m         | 20W/m          |
| Luminous Flux    | 210lm/m       | 420lm/m         | 590lm/m        |
| Color Wavelength | Red:620-630nm | Green:515-525nm | Blue:460-470nm |

## TM-30-15 Data

4000K Rf: 81.4/Rg: 93.4



## Mechanical Diagram





## Accessories

| Picture   | Part No.                   | Description   |
|---|----------------------------|---|
|    | SL-V-12XXXP<br>SL-V-24XXXP | Plastic Power Supply,output: DC12V or 24V,<br>Output Power Options:12W,24W,36W,48W,60W,72W,96W,120W.              |
|    | SL-V-12XXXM<br>SL-V-24XXXM | Metal Power Supply,output: DC12V or 24V,<br>Output Power Options: 25W,50W,60W,100W,145W,200W,250W,350W,400W,500W. |
|    | SL-V-12XXX<br>SL-V-24XXX   | Waterproof Power Supply,output: DC12V or 24V,<br>Output Power Options:15W,18W,30W,40W,60W,100W,150W,200W.         |
|    | SL-01CP                    | Crystal Plugs with 15cm waterproof wire.  |
|    | C2R-C100M                  | RGB Crystal Plugs with 15cm waterproof wire.  |
|   | SL-CL-F                    | JST Female Connector with 15cm wire.  |
|  | SL-CL-M                    | JST Male Connector with 15cm wire.  |
|  | SL-XBB-2                   | 2pin Connector for strips 8mm/10mm/12mm/15mm without wire.  |
|  | LTW-EZ-RGB-15              | RGB Connector for strips 8mm/10mm/12mm/15mm with 15cm wire.   |
|  | SL-XBB-2A                  | 2pin Connector for strips 8mm/10mm/12mm/15mm with 15cm wire.  |
|  | SL-XBB-Ax2                 | 2pin Connector for strips 8mm/10mm/12mm/15mm with 15cm wire.  |
|  | SL-C-X-A                   | Connector with 50cm 18 AWG wire.  |
|  | SL-C-X-Ax2                 | Connector with 50cm 18 AWG wire.  |
|  | SL-C-X-B                   | Connector without wire.   |