



General Parameter	
Working Voltage	12V/24V DC
Cuttable	3LEDs/section(12V) 6LEDs/section or 7LEDs/section(24V)
LED Type	SMD 2835
LED Beam Angle	120
CRI	95+
R9	90
FPC Substrate Color	White
FPC Width	10mm/12mm
FPC Thickness	20Z/40Z
Working Temperature	0°C-40°C
Storage Temperature	-20°C-70°C
IP Rating	IP54 (Top Brand Silicone as conformal coating)
Lifespan	50,000h
Standard Package	5m(17ft)/roll
Dimmable	Yes
Certificates	CE, RoHS, ETL

This "Sunlike" LED Strip comes with a unique feature that emits NO or very little blue wavelengths of light known to suppress melatonin unlike ordinary white LEDs, making it a perfect choice for people who are prone to tossing, turning, and awakening in the middle of the night. Low blue LED light is notably better than typical white LEDs in terms of circadian cycle regulation and human health. LEDwise has evolved a low blue light technology which ensures minimal amount of blue lighting and high color rendering.



Applications

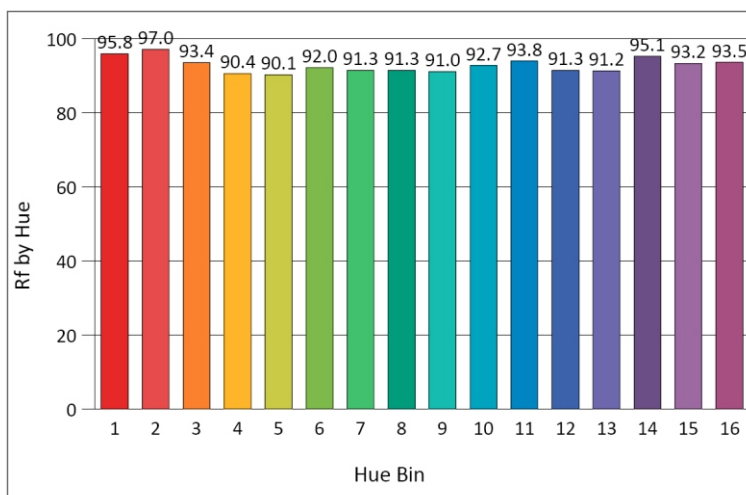
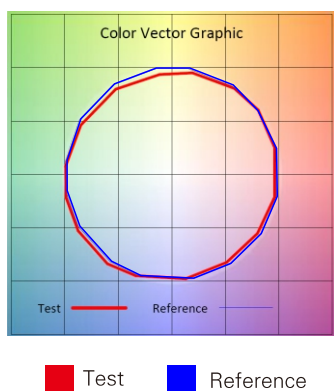
- Architectural lights for canopy, corridor, window, archway
- Backlight or edge lighting for signage
- Decorative lights for holiday, event, show, exhibition
- Cove lighting
- DIY lights for home use
- Path and contour marking

Electro-optical Characteristics

LEDs/m(ft)	Wattage W/m(ft)	CCT	LM/m(ft)
120(35)	28.8(7.2)	2700K	2050(600)
		3000K	2100(620)
		4000K	2300(660)
		6000K	2300(660)

TM-30-15 Data

4000K Rf: 92.6/Rg: 96.9





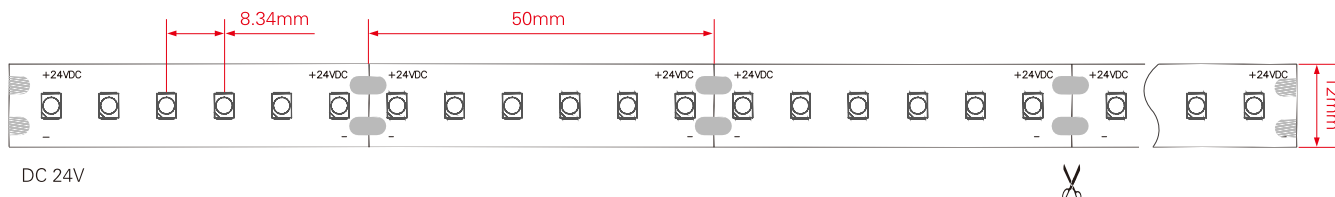
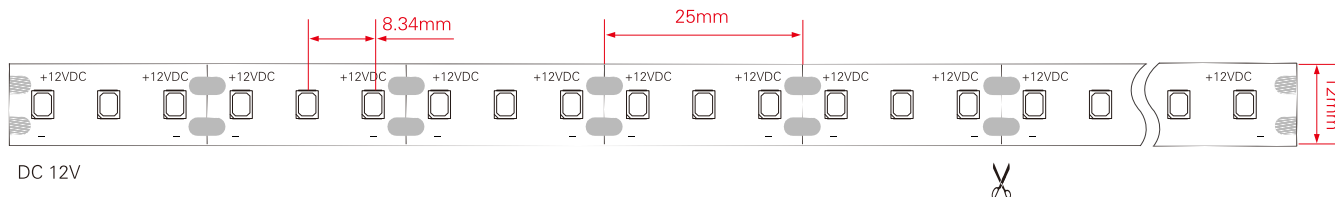
SKU Builder Direction

X1 Product Name	X2 LED Type	X3 LED Color	X4 LEDs	X5 FPC Color	X6 FPC Width	X7 IP Rate	X8 Voltage	X9
Code	Code	Code	Code	Code	Code	Code	Code	Code
FR LED Strip light	2835 SMD2835	V 2700K	120 120LEDs/m	WH White	10 10mm	OE IP54	12 12V DC	S Sunlike
		W 3000K	35 35LEDs/ft		12 12mm		24 24V DC	
		N 4000K						
		C 6000K						

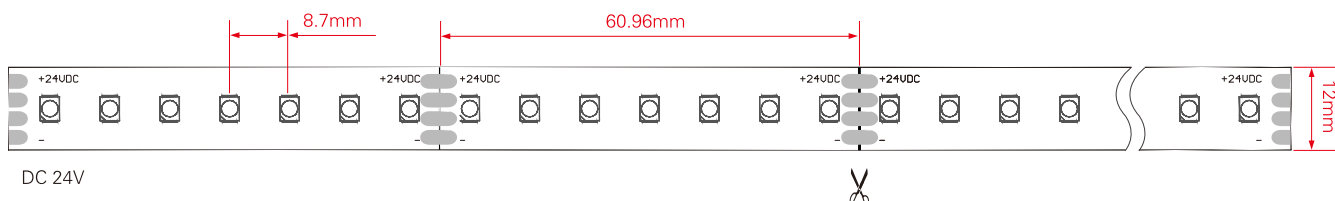
Example: $\frac{FR}{X1} \frac{2835}{X2} \frac{V}{X3} \frac{120}{X4} \frac{WH}{X5} \frac{12}{X6} \frac{OE}{X7} \frac{24}{X8} \frac{S}{X9}$

Mechanical Diagram

120LEDs/m 12mm



35LEDs/ft 12mm





Accessories

Picture	Part No.	Description
	SL-V-12XXXP SL-V-24XXXP	Plastic Power Supply,output: DC12V or 24V, Output Power Options:12W,24W,36W,48W,60W,72W,96W,120W.
	SL-V-12XXXM SL-V-24XXXM	Metal Power Supply,output: DC12V or 24V, Output Power Options: 25W,50W,60W,100W,145W,200W,250W,350W,400W,500W.
	SL-V-12XXX SL-V-24XXX	Waterproof Power Supply,output: DC12V or 24V, Output Power Options:15W,18W,30W,40W,60W,100W,150W,200W.
	SL-01CP	Crystal Plugs with 15cm waterproof wire.
	SL-CL-F	JST Female Connector with 15cm wire.
	SL-CL-M	JST Male Connector with 15cm wire.
	SL-XBB-2	2pin Connector for strips 8mm/10mm/12mm/15mm without wire.
	SL-XBB-2A	2pin Connector for strips 8mm/10mm/12mm/15mm with 15cm wire.
	SL-XBB-Ax2	2pin Connector for strips 8mm/10mm/12mm/15mm with 15cm wire.
	SL-C-X-A	Connector with 50cm 18 AWG wire.
	SL-C-X-Ax2	Connector with 50cm 18 AWG wire.
	SL-C-X-B	Connector without wire.