



General Parameter	
Working Voltage	24V DC
Cuttable	6LEDs/section
LED Type	SMD 2835
LED Beam Angle	120
CRI	95+
R9	90+
FPC Substrate Color	White
FPC Width	12mm
FPC Thickness	2OZ
Working Temperature	0°C-40°C
Storage Temperature	-20°C-70°C
IP Rating	IP54 (Top Brand Silicone as conformal coating)
Lifespan	50,000h
Standard Package	5m/roll
Dimmable	Yes
Certificates	CE, RoHS, ETL

S-Shape (Zig-Zag or Twist) LED strip light is a unique product that allows much sharper horizontal turns than traditional LED strip lights, allowing creations that wouldn't otherwise be possible. Uses high CRI LEDs for superior color rendering with an optically clear protective conformal coating. It's a perfect solution for a wide variety of architectural and accent lighting applications including; cove lighting, under-cabinet lighting, back-lighting, pathway lighting and decorative lighting.

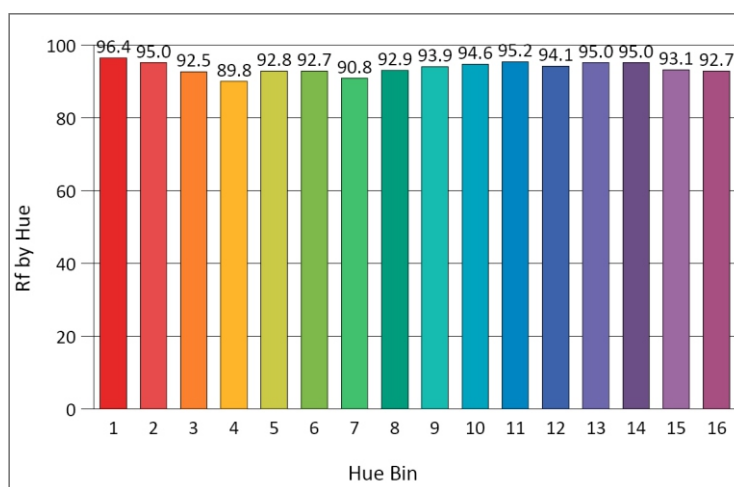
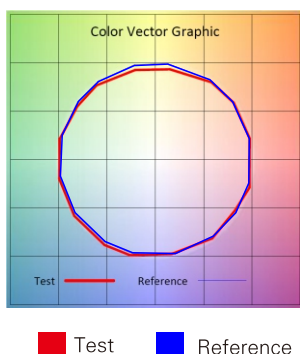


Electro-optical Characteristics

LEDs/ft	Wattage	CCT	Luminous Flux
18LEDs	3W/ft	2700K	215lm/ft
		3000K	220lm/ft
		4000K	240lm/ft
		6000K	240lm/ft

TM-30-15 Data

2700K Rf: 93.5/Rg: 98.4

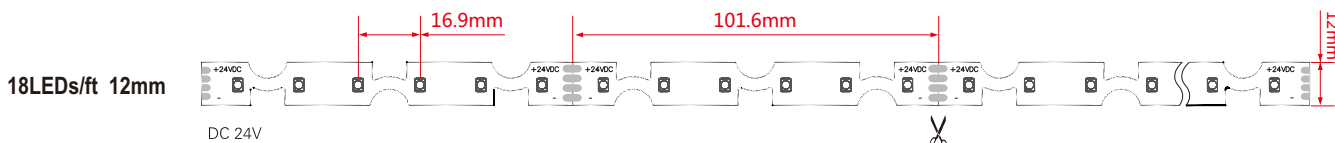


SKU Builder Direction

X1 Product Name	X2 LED Type	X3 LED Color	X4 LEDs	X5 FPC Color	X6 FPC Width	X7 IP Rate	X8 Voltage	X9 CRI
Code	Code	Code	Code	Code	Code	Code	Code	Code
FT Twist Strip light	2835 SMD2835	V 2700K	18 18LEDs/ft	WH White	12 12mm	OE IP54	24 24V DC	T CRI>95
		W 3000K						
		N 4000K						
		C 6000K						

Example: $\frac{FT}{X1} \frac{2835}{X2} \frac{V}{X3} \frac{18}{X4} \frac{WH}{X5} \frac{12}{X6} \frac{OE}{X7} \frac{24}{X8} \frac{T}{X9}$

Mechanical Diagram





Accessories

Picture	Part No.	Description
	SL-V-12XXXP SL-V-24XXXP	Plastic Power Supply,output: DC12V or 24V, Output Power Options:12W,24W,36W,48W,60W,72W,96W,120W.
	SL-V-12XXXM SL-V-24XXXM	Metal Power Supply,output: DC12V or 24V, Output Power Options: 25W,50W,60W,100W,145W,200W,250W,350W,400W,500W.
	SL-V-12XXX SL-V-24XXX	Waterproof Power Supply,output: DC12V or 24V, Output Power Options:15W,18W,30W,40W,60W,100W,150W,200W.
	SL-01CP	Crystal Plugs with 15cm waterproof wire.
	SL-CL-F	JST Female Connector with 15cm wire.
	SL-CL-M	JST Male Connector with 15cm wire.
	SL-XBB-2	2pin Connector for strips 8mm/10mm/12mm/15mm without wire.
	SL-XBB-2A	2pin Connector for strips 8mm/10mm/12mm/15mm with 15cm wire.
	SL-XBB-Ax2	2pin Connector for strips 8mm/10mm/12mm/15mm with 15cm wire.
	SL-C-X-A	Connector with 50cm 18 AWG wire.
	SL-C-X-Ax2	Connector with 50cm 18 AWG wire.
	SL-C-X-B	Connector without wire.