

General Parameter	
Working Voltage	12V/24V DC
Cutttable	3LEDs/section(12V) 6LEDs/section(24V)
LED Beam Angle	120
CRI	90+
FPC Substrate Color	Brown, White, Black
FPC Width	8mm/10mm/12mm/15mm
FPC Thickness	2OZ/4OZ
Working Temperature	0°C-40°C
Storage Temperature	-20°C-70°C
IP Rating	IP20, IP54, IP65, IP67
Lifespan	50,000h
Standard Package	5m/roll
Dimmable	Yes
Certificates	CE, RoHS, ETL

## Applications

- Architectural lights for canopy, corridor, window, archway
- Backlight or edge lighting for signage
- Decorative lights for holiday, event, show, exhibition
- Cove lighting
- DIY lights for home use
- Path and contour marking



## Electro-optical Characteristics

White color

LEDs/m	Wattage	CCT	Luminous Flux
30LEDs	3.6W/m	2200K	205lm/m
		2700K	270lm/m
		3000K	280lm/m
		3500K	290lm/m
		4000K	300lm/m
		6000K	300lm/m
60LEDs	7.2W/m	2200K	410lm/m
		2700K	540lm/m
		3000K	560lm/m
		3500K	570lm/m
		4000K	600lm/m
		6000K	600lm/m

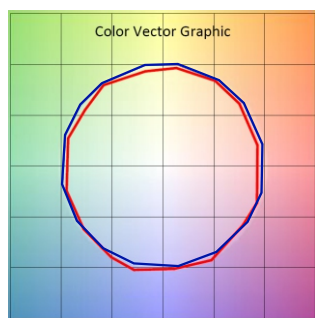
LEDs/m	Wattage	CCT	Luminous Flux
120LEDs	14.4W/m	2200K	800lm/m
		2700K	1050lm/m
		3000K	1080lm/m
		3500K	1100lm/m
		4000K	1150lm/m
		6000K	1150lm/m
240LEDs	20W/m	2200K	1200lm/m
		2700K	1500lm/m
		3000K	1580lm/m
		3500K	1620lm/m
		4000K	1700lm/m
		6000K	1700lm/m

Colored

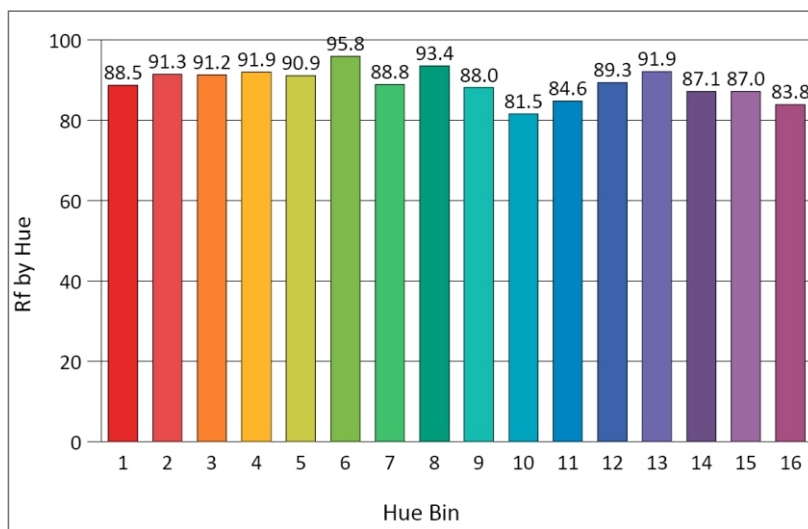
LEDs/m	30LEDs	60LEDs	120LEDs	240LEDs
Wattage	2.4W/m	4.8W/m	9.6W/m	19.2W/m
Color Wavelength	Red:620-630nm	Yellow:585-595nm	Green:515-525nm	Blue:460-470nm

## TM-30-15 Data

3000K Rf: 89/Rg: 97.1



■ Test    ■ Reference





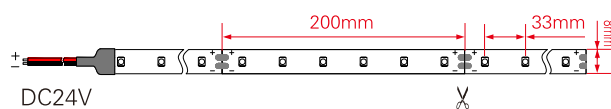
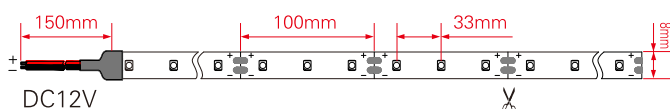
## SKU Builder Direction

X1 Product Name	X2 LED Type	X3 LED Color	X4 LED/M	X5 FPC Color	X6 FPC Width	X7 IP Rate	X8 Voltage	X9 CRI
Code	Code	Code	Code	Code	Code	Code	Code	Code
FR LED Strip light	3528 SMD3528	E 2200K	30 30LEDs/m	WH White	8 8mm	I IP20	12 12V DC	U CRI>90
		V 2700K	60 60LEDs/m	BR Brown	10 10mm	OE IP54	24 24V DC	P CRI>80
		W 3000K	120 120LEDs/m	BL Black	12 12mm	OA IP65		
		N 4000K	240 240LEDs/m		15 15mm	OB IP67		
		C 6000K						
		R Red						
		G Green						
		B Blue						
		Y Yellow						

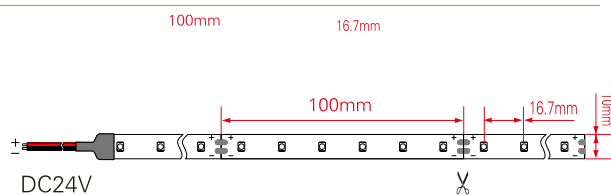
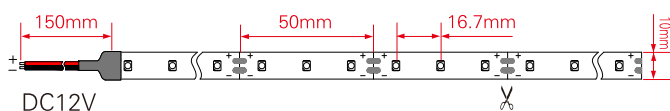
Example:  $\frac{FR}{X1} \frac{3528}{X2} \frac{W}{X3} \frac{60}{X4} \frac{WH}{X5} \frac{10}{X6} \frac{OE}{X7} \frac{24}{X8} \frac{U}{X9}$

## Mechanical Diagram

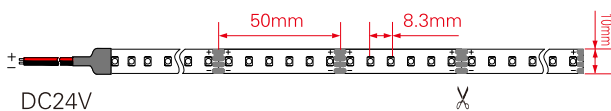
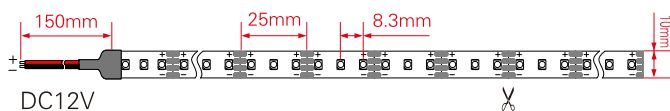
### 30LEDs/m



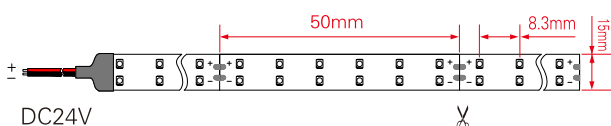
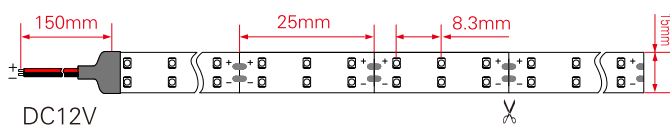
### 60LEDs/m



### 120LEDs/m



### 240LEDs/m





## Accessories

Picture	Part No.	Description
	SL-V-12XXXP SL-V-24XXXP	Plastic Power Supply,output: DC12V or 24V, Output Power Options:12W,24W,36W,48W,60W,72W,96W,120W.
	SL-V-12XXXM SL-V-24XXXM	Metal Power Supply,output: DC12V or 24V, Output Power Options: 25W,50W,60W,100W,145W,200W,250W,350W,400W,500W.
	SL-V-12XXX SL-V-24XXX	Waterproof Power Supply,output: DC12V or 24V, Output Power Options:15W,18W,30W,40W,60W,100W,150W,200W.
	SL-01CP	Crystal Plugs with 15cm waterproof wire.
	SL-CL-F	JST Female Connector with 15cm wire.
	SL-CL-M	JST Male Connector with 15cm wire.
	SL-XBB-2	2pin Connector for strips 8mm/10mm/12mm/15mm without wire.
	SL-XBB-2A	2pin Connector for strips 8mm/10mm/12mm/15mm with 15cm wire.
	SL-XBB-Ax2	2pin Connector for strips 8mm/10mm/12mm/15mm with 15cm wire.
	SL-C-X-A	Connector with 50cm 18 AWG wire.
	SL-C-X-Ax2	Connector with 50cm 18 AWG wire.
	SL-C-X-B	Connector without wire.