

General Parameter	
Working Voltage	24V DC (12V DC available)
Cuttable	6LEDs/section or 7LEDs/section
LED Beam Angle	120
CRI	90+
R9	60+
FPC Substrate Color	White, Brown
FPC Width	10mm
FPC Thickness	2OZ
Working Temperature	0°C-40°C
Storage Temperature	-20°C-70°C
IP Rating	IP20, IP54, IP65, IP67
Lifespan	50,000h
Standard Package	5m/roll
Dimmable	Yes
Certificates	CE, RoHS, ETL

Highlights of 2110

2110 Series is a new and highly bendable LED strip, even it could be randomly knotted without any damage or influence on its quality and performance.





Electro-optical Characteristics

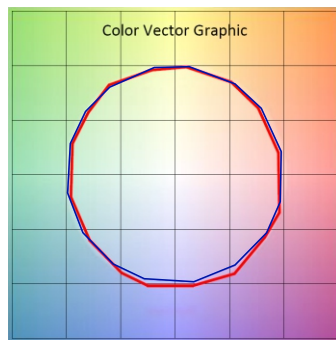
LEDs/m	Wattage	CCT	Luminous Flux
60LEDs	4.8W/m	1800K	250lm/m
		2200K	265lm/m
		2700K	350lm/m
		3000K	360lm/m
		3500K	370lm/m
		4000K	400lm/m
		5000K	400lm/m
		6000K	400lm/m
70LEDs	4.8W/m	1800K	290lm/m
		2200K	310lm/m
		2700K	405lm/m
		3000K	415lm/m
		3500K	430lm/m
		4000K	460lm/m
		5000K	460lm/m
		6000K	460lm/m
112LEDs	7.6W/m	1800K	465lm/m
		2200K	495lm/m
		2700K	645lm/m
		3000K	660lm/m
		3500K	690lm/m
		4000K	730lm/m
		5000K	730lm/m
		6000K	730lm/m

LEDs/m	Wattage	CCT	Luminous Flux
140LEDs	9.6W/m	1800K	580lm/m
		2200K	620lm/m
		2700K	810lm/m
		3000K	830lm/m
		3500K	865lm/m
		4000K	910lm/m
		5000K	910lm/m
		6000K	910lm/m
210LEDs	14.4W/m	1800K	870lm/m
		2200K	925lm/m
		2700K	1215lm/m
		3000K	1245lm/m
		3500K	1290lm/m
		4000K	1350lm/m
		5000K	1350lm/m
		6000K	1350lm/m
280LEDs	19.2W/m	1800K	1160lm/m
		2200K	1220lm/m
		2700K	1600lm/m
		3000K	1640lm/m
		3500K	1700lm/m
		4000K	1800lm/m
		5000K	1800lm/m
		6000K	1800lm/m

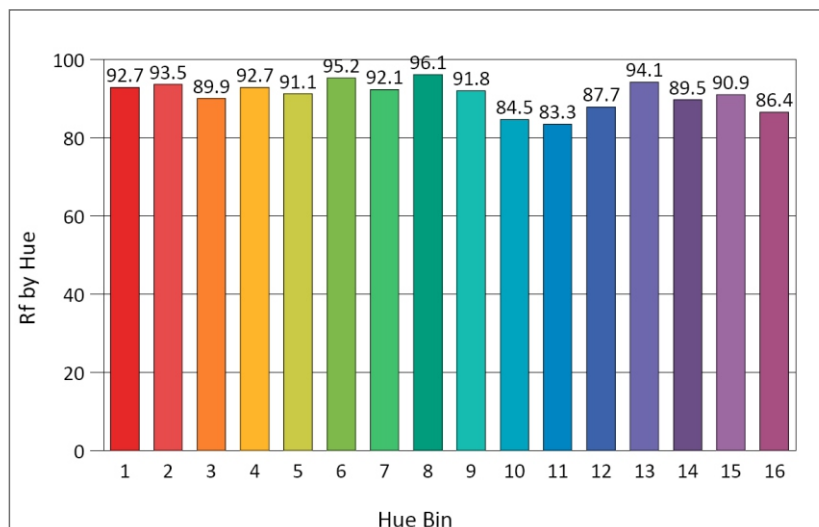
• Other colors available upon request

TM-30-15 Data

3000K Rf:90.6/Rg:100.4



■ Test ■ Reference



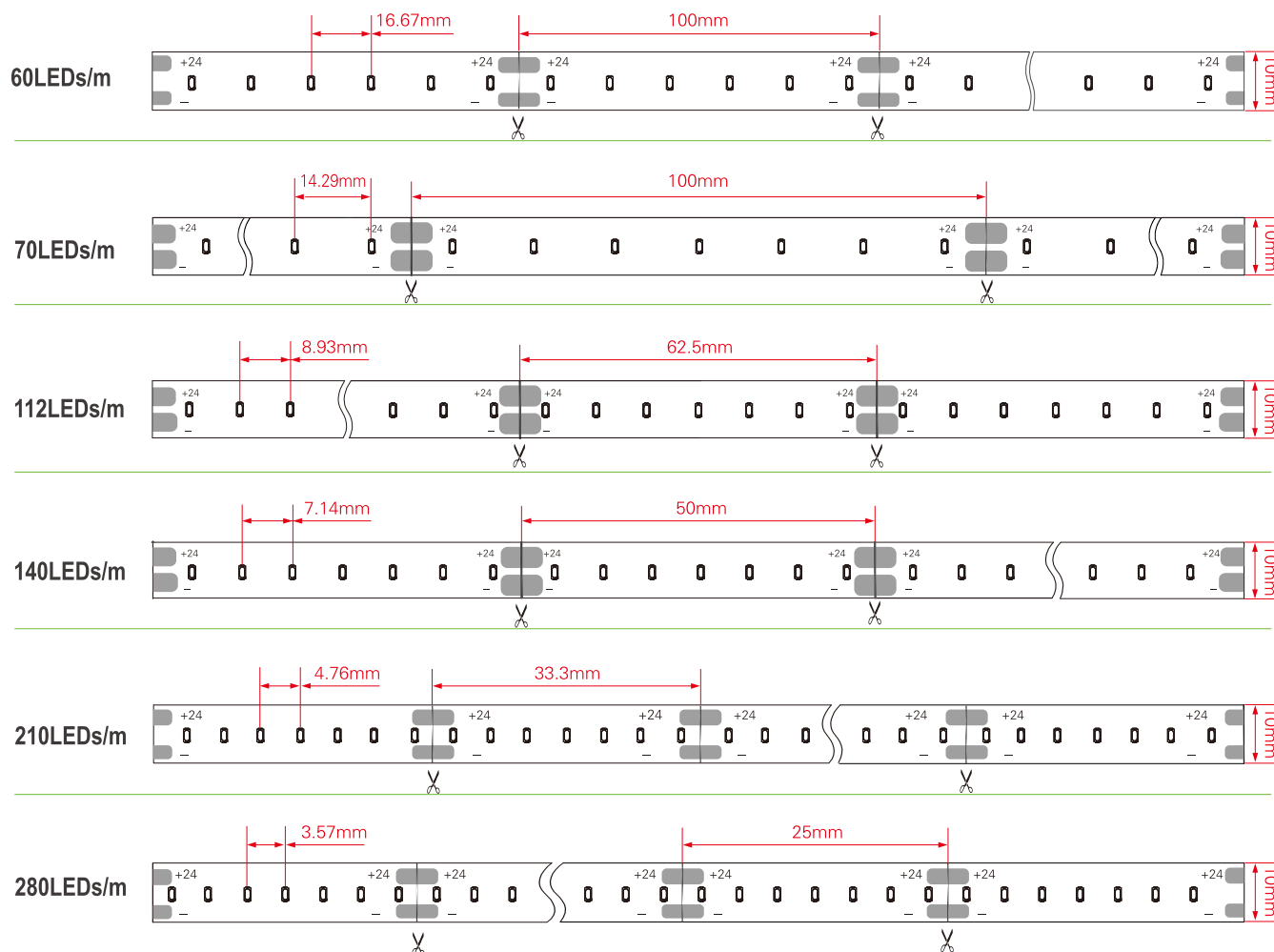


SKU Builder Direction

X1	X2	X3	X4	X5	X6	X7	X8	X9
Product Name	LED Type	LED Color	LED/M	FPC Color	FPC Width	IP Rate	Voltage	CRI
Code	Code	Code	Code	Code	Code	Code	Code	Code
FR LED Strip Light	2110 SMD2110	A 1800K	60 60LEDs	WH White	10 10mm	I IP20	24 24V DC	U CRI>90
		E 2200K	70 70LEDs	BR Brown		OE IP54		
		V 2700K	112 112LEDs			OA IP65		
		W 3000K	140 140LEDs			OB IP67		
		N 4000K	210 210LEDs					
		C 6000K	280 280LEDs					

Example: FR 2110 E 60 WH 10 OE 24 U
 X1 X2 X3 X4 X5 X6 X7 X8 X9

Mechanical Diagram





Accessories

Picture	Part No.	Description
	SL-V-12XXXP SL-V-24XXXP	Plastic Power Supply,output: DC12V or 24V, Output Power Options:12W,24W,36W,48W,60W,72W,96W,120W.
	SL-V-12XXXM SL-V-24XXXM	Metal Power Supply,output: DC12V or 24V, Output Power Options: 25W,50W,60W,100W,145W,200W,250W,350W,400W,500W.
	SL-V-12XXX SL-V-24XXX	Waterproof Power Supply,output: DC12V or 24V, Output Power Options:15W,18W,30W,40W,60W,100W,150W,200W.
	SL-01CP	Crystal Plugs with 15cm waterproof wire.
	SL-CL-F	JST Female Connector with 15cm wire.
	SL-CL-M	JST Male Connector with 15cm wire.
	SL-XBB-2	2pin Connector for strips 8mm/10mm/12mm/15mm without wire.
	SL-XBB-2A	2pin Connector for strips 8mm/10mm/12mm/15mm with 15cm wire.
	SL-XBB-Ax2	2pin Connector for strips 8mm/10mm/12mm/15mm with 15cm wire.
	SL-C-X-A	Connector with 50cm 18 AWG wire.
	SL-C-X-Ax2	Connector with 50cm 18 AWG wire.
	SL-C-X-B	Connector without wire.